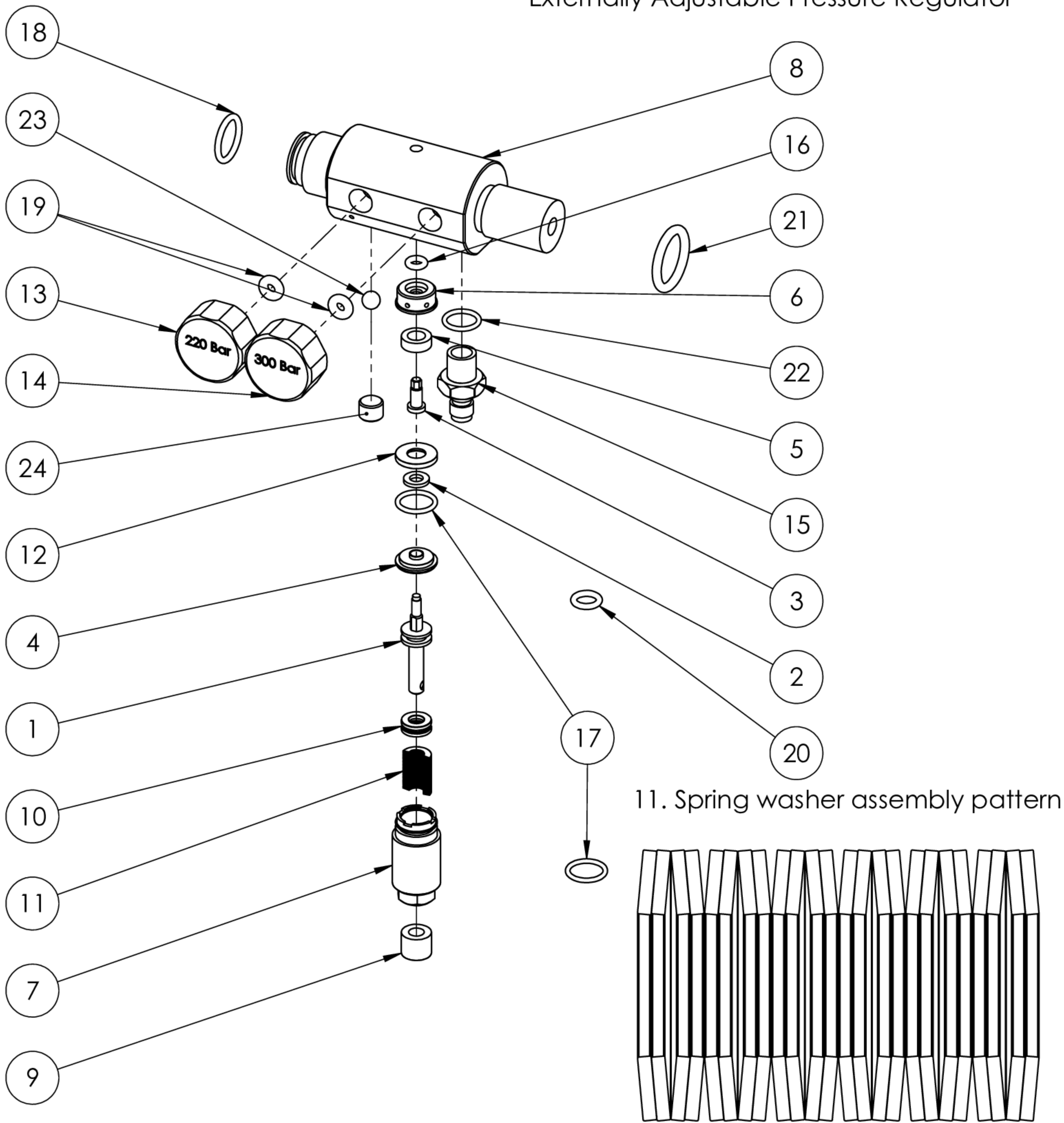


# Externally Adjustable Pressure Regulator



ITEM NO.	PART NUMBER	QTY.
1	1. Piston V.8	1
2	2. Rubber seal	1
3	3. Screw V.8	1
4	4. Sealing washer V.8	1
5	5. Filter	1
6	6. Washer	1
7	7. Retaining body	1
8	8. Body	1
9	9. Adjustment screw	1
10	10. Bearing	1
11	11. Spring washer assembly	1
12	12. Seal holder	1
13	Low pressure gauge	1
14	High pressure gauge	1
15	Fill nipple with check valve	1
16	O-ring ID 3.5x2 NBR90	1
17	O-ring ID 11x1.5 NBR70	2
18	O-ring ID 13x2 NBR90	1
19	O-ring ID 3x3 NBR70	2
20	O-ring ID 6.5x2 NBR70	1
21	O-ring ID 17x3 NBR70	1
22	O-ring ID 10x1.5 NBR70	1
23	Ball 6mm	1
24	M8x6 DIN913	1